

# Buddies in Bad Times Theatre Visual Story



This document will help prepare you for your visit to Buddies in Bad Times Theatre. It includes directions to our theatre, and a step-by-step guide to what happens before the show to help you access and understand your experience of the building.

Buddies in Bad Times Theatre is a large building located in downtown Toronto with two performance spaces - the Cabaret, where community organizations and independent artists host events, and the Chamber where we present shows as part of our Main Stage Season.

## Getting Here

We are located at 12 Alexander Street. The closest major intersection is Yonge and College



**BIKES** – we have ring posts in front of the building, and there is a large bank of posts just south of us on Wood Street. The closest Toronto Bike Share station is one block east at the corner of Alexander and Church.



**SUBWAY** – take Line 1 to Wellesley Station, we are 1/2 a block south.



**STREETCAR** – take the 506 College line, get off at Yonge Street and head north.

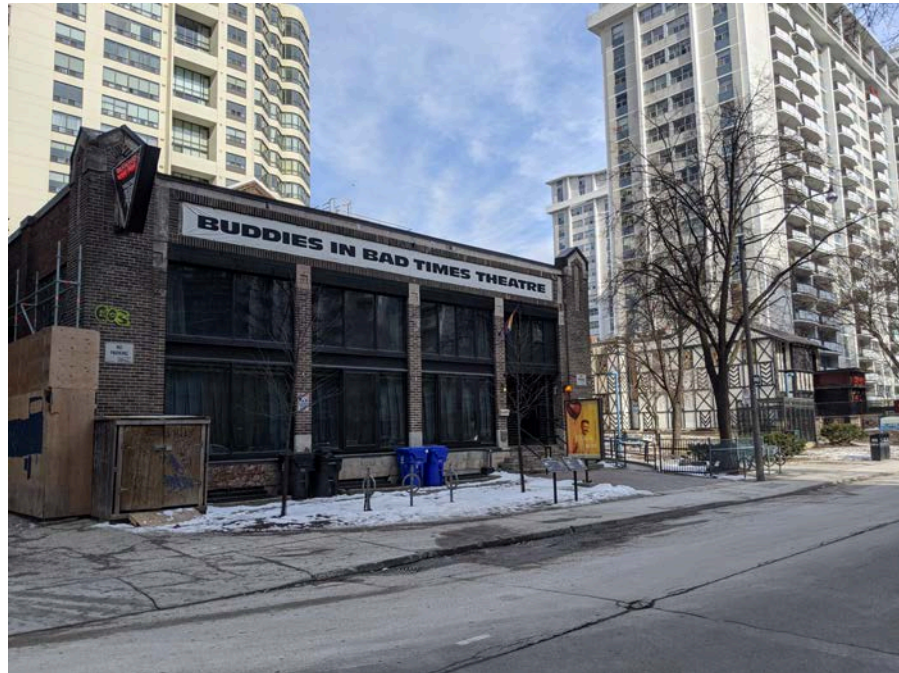


**BUS** – take the 94 Wellesley line, get off at Wellesley station and head south



**PARKING** – we do not have parking on site, but there is metered parking on Alexander Street and a GreenP lot on Wellesley just east of Yonge.

This is what our building looks like if you are coming from Yonge Street.



And this is what it looks like if you are coming from Church Street.





Once you get here, you enter the building by going up a ramp to our main entrance on the side of the building next to the park.



[image: at the bottom of the ramp]



[image: looking up the ramp]



[image: main entrance doors]

As soon as you enter, you will see our box office window. This is where you can pick up your tickets if you need to. If you already have your tickets, head to the black podium where one of our staff members will welcome you and show you where to go.



# The Cabaret

To your left is our cabaret space. You may be coming to see a show in the cabaret. Sometimes, our cabaret is used as a lobby where you can wait before a show - there will be chairs and tables set out. This room has a bar where you can purchase alcoholic and non-alcoholic drinks.



[image: this is the entrance to the Cabaret]



[image: this is what the Cabaret looks like]

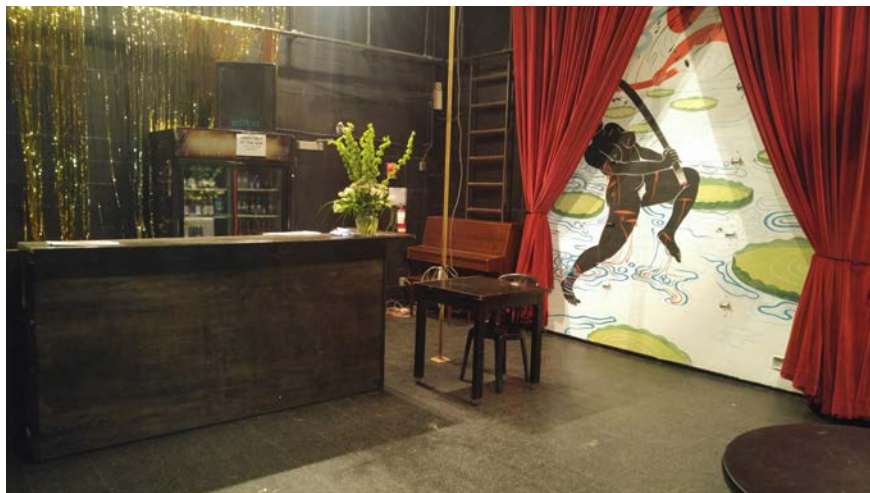
# The Ante Chamber

Right in front of you is our Ante Chamber. If you are seeing a show in our Chamber space, you might go into this room before the show. This space is used as a lobby when our cabaret space is busy. This room has benches and chairs for sitting, and there is a bar where you can purchase alcoholic and non-alcoholic beverages.

[image: this is the entrance to the Ante Chamber]



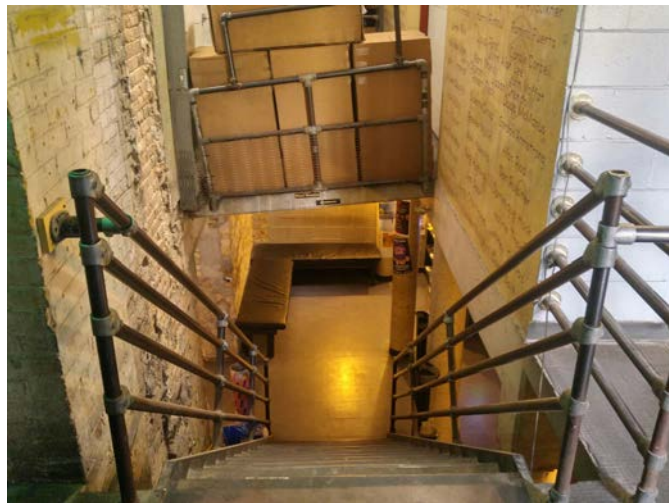
[image: this is what the Ante Chamber looks like]





# Getting to the Washrooms

If you need to use the washrooms, go down the flight of stairs next to the entrance and turn left. There is one large gender-neutral washroom with ten stalls and a communal sink, as well as a single-user, universal stall further down the hallway. There is also an elevator that can take you down to the washrooms. This elevator requires a key, so if you wish to use the elevator you can speak to one of our theatre staff or volunteers.



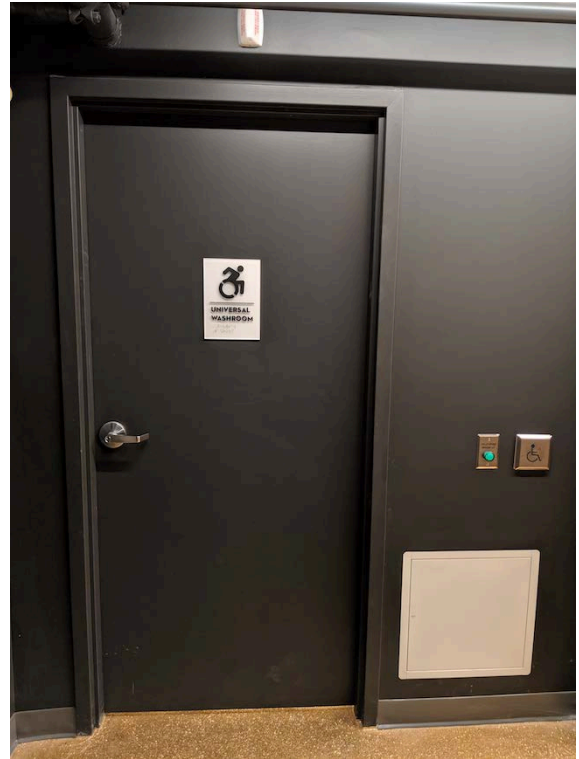
[image: the stairs down to the washroom]



[image: washroom signage]



[image: entrance to the all-gender washroom]



[image: entrance to the universal washroom]

## Quiet Area

If at any time you are feeling uncomfortable or just need a space to sit down and relax, you can go and sit on these benches at the bottom of the stairs next to the washrooms.



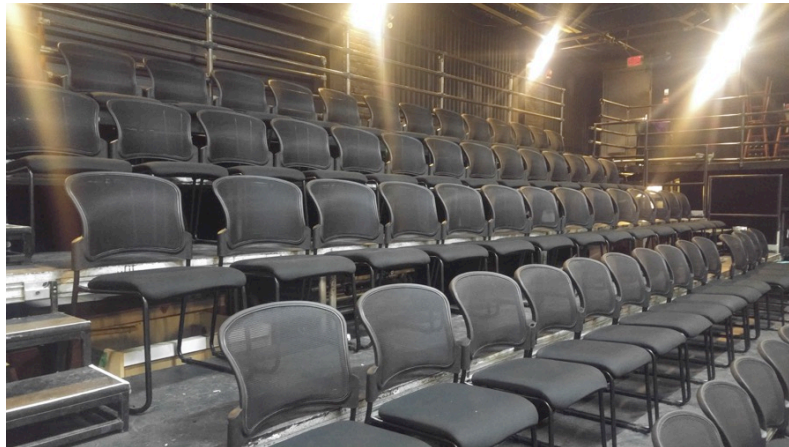
[image: benches in the quiet area]



# The Chamber

If you're seeing a show in the Chamber space, our staff will make an announcement in the lobby to let you know when the theatre is open.

Usually you will enter the theatre through a door next to the box office, and walk through a short, curtained hallway to the stage and seating area. There will be lots of chairs and you can sit in any empty seat you choose. There will usually be a row of stairs on the floor, but most are up some stairs.



[image: a view of our theatre seating]

We hope you had a good time at our theatre.

If you want to tell us about your time here, or have feedback you would like to share, you can call us, write to us, or send us an email.

## **Our address is**

12 Alexander Street, Toronto ON, M4Y 1B4

## **Our email address is**

[tickets@buddiesinbadtimes.com](mailto:tickets@buddiesinbadtimes.com)

## **Our phone number is**

416-975-8555

Thank you for coming.