

# Buddies in Bad Times Theatre Venue Guide



This document will help prepare you for your visit to Buddies in Bad Times Theatre. It includes directions to our theatre and a step-by-step guide to what happens before the show to help you access and understand your experience of the building.

Buddies in Bad Times Theatre is a large building located in downtown Toronto with two performance spaces - the Cabaret, where community organizations and independent artists host events, shows, and parties; and the Chamber, where we present shows as part of our mainstage season.

## Getting Here

We are located at 12 Alexander Street. The closest major intersection is Yonge and College



BIKES – we have ring posts in front of the building, and there is a large bank of posts just south of us on Wood Street. The closest Toronto Bike Share station is one block east at the corner of Alexander and Church.



SUBWAY – take Line 1 to Wellesley Station, we are 1/2 a block south.



STREETCAR – take the 506 College line, get off at Yonge Street and head north.

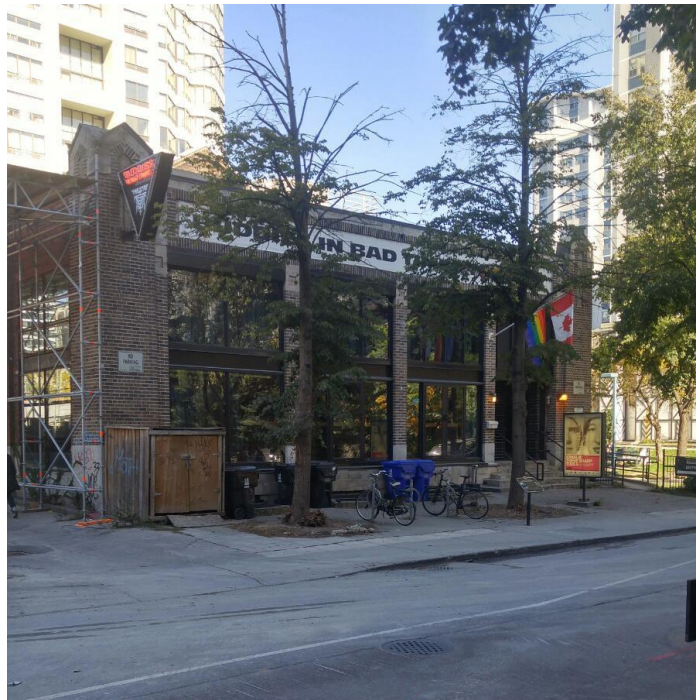


BUS – take the 94 Wellesley line, get off at Wellesley station and head south



PARKING – we do not have parking on site, but there is metered parking on Alexander Street and a GreenP lot on Wellesley just east of Yonge.

This is what our building looks like if you are coming from Yonge Street.



And this is what it looks like if you are coming from Church Street.

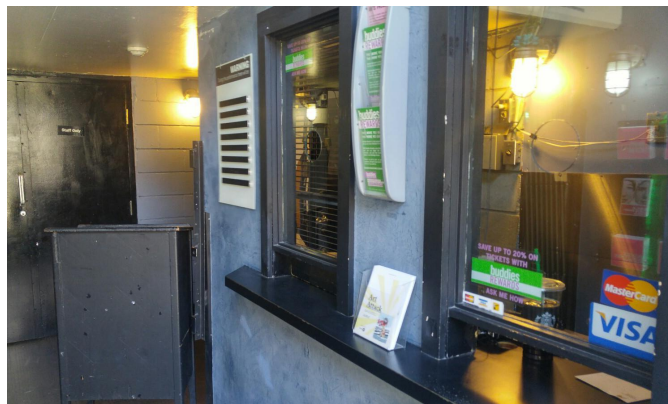




Once you get here, you enter the building by going up a ramp to our main entrance on the side of the building next to the park.



As soon as you enter, you will see our box office window. This is where you can pick up your tickets if you need to. If you already have your tickets, head to the black podium where one of our staff members will welcome you and show you where to go.



## COVID-19 Safety

We continue to encourage patrons to wear masks when not actively drinking. Producers can choose to implement contact tracing measures for their event if requested in advance. Please see individual show or event pages for more details on masking during events in our space.

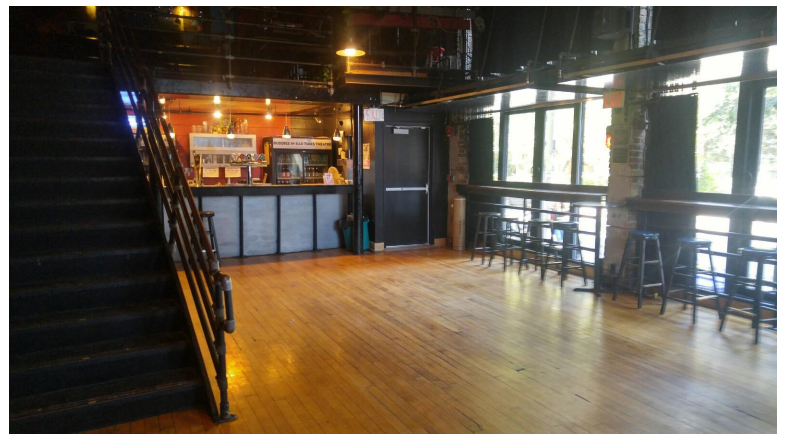
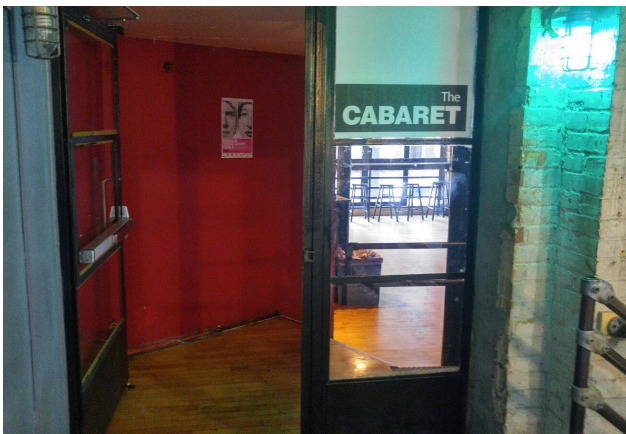
Masking policies for mainstage shows are determined in conversation with the artists and production teams. Please see individual show pages for more information.

Artists and staff are asked to wear masks inside our facilities at all times, unless performing live/on-screen during filming, or while eating, drinking, or serving drinks at late night events.

For more information regarding Buddies' COVID-19 safety policy, visit <https://buddiesinbadtimes.com/covid-safety/>

## The Cabaret

To your left is our cabaret space. There will be chairs and tables set out. This room has a bar where you can purchase alcoholic and non-alcoholic drinks.



*This is the entrance and inside of the Cabaret space (below).*

## The Ante Chamber

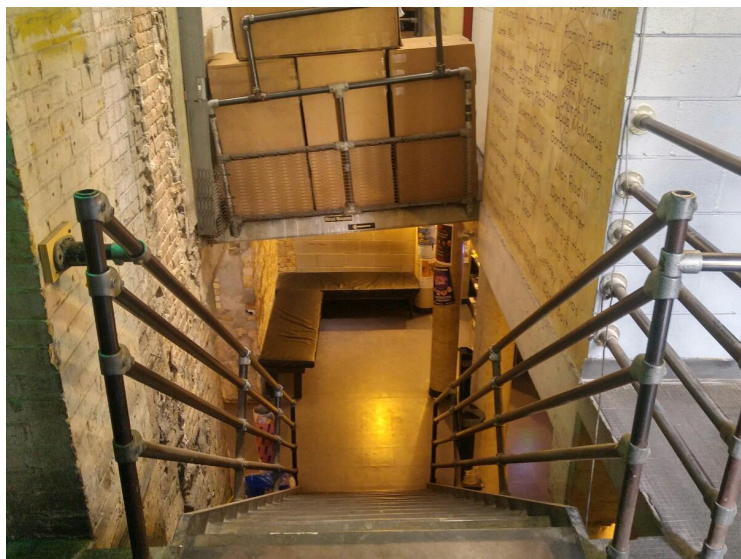
Right in front of you is our Ante Chamber. This space is sometimes used as a lobby space, a chill-out space during relaxed performances, or a secondary bar during our late nights. Depending on the reason for your visit, you may or may not see this room.



*This is the inside of the Ante Chamber space (above).*

## Getting to the Washrooms

If you need to use the washrooms, go down the flight of stairs next to the entrance and turn left. There is one gender neutral washroom, and one universal private washroom.







*You will see this sign at the bottom of the stairs after turning left. The washroom is gender neutral.*



There is also an attendant-operated lift that can take you down to the washroom. This elevator requires a key, so if you wish to use the elevator you can speak to one of our theatre staff.



*This is the elevator lift (above).*

## **Additional Quiet Area**

If at any time you need a space to sit down and relax, you can also go and sit on these benches at the bottom of the stairs next to the washroom.





# The Chamber

Our staff will make an announcement in the lobby to let you know when the Chamber is open. The seating configuration may change from show to show, but for most productions, you can sit in any empty seat you choose.



## Audience Evacuation Procedures In Case Of Fire Alarm

In the case of a fire alarm, the house lights will come up and the performance will stop.

Buddies staff will inform the audience that the show is being stopped and the building is being evacuated. Buddies staff will direct the audience out through the pre established Fire Exits and away from the building, closing all doors behind them.

The official meeting location is across the street from Buddies in front of the hotel. It is at this spot we will wait for the Fire Department to arrive.

We hope you have a good time at our theatre. If you want to tell us about your time here, or have feedback you would like to share, you can call us, write to us, or send us an email.

## **Our address is**

12 Alexander Street, Toronto ON, M4Y 1B4

## **Our email address is**

[tickets@buddiesinbadtimes.com](mailto:tickets@buddiesinbadtimes.com)

## **Our phone number is**

416-975-9130

Thank you for coming.